

ILO Intranet Redesign

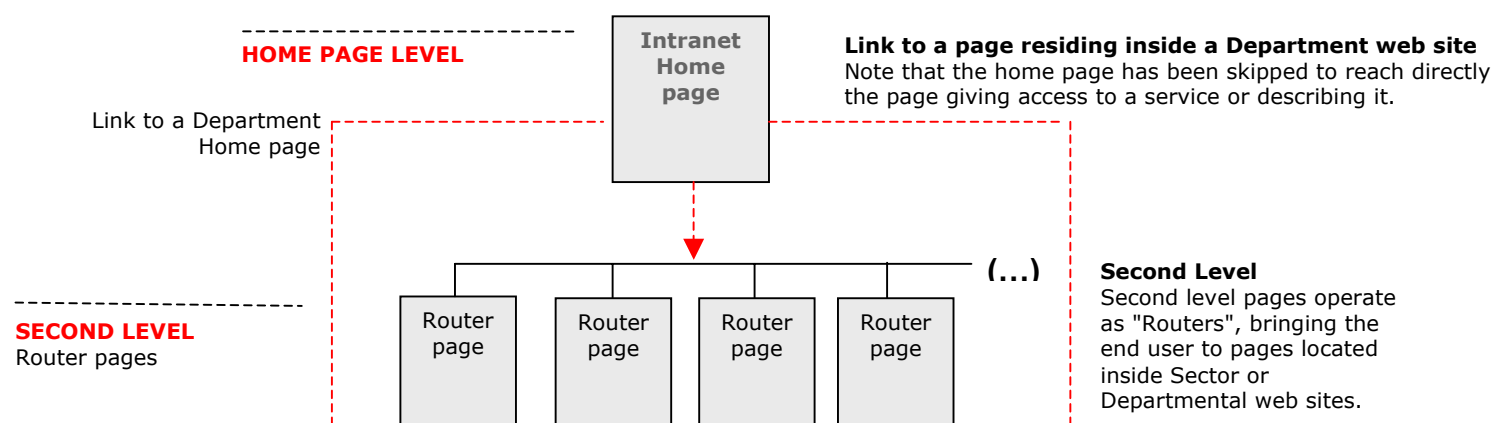
Concept and Information Architecture

Information Architecture

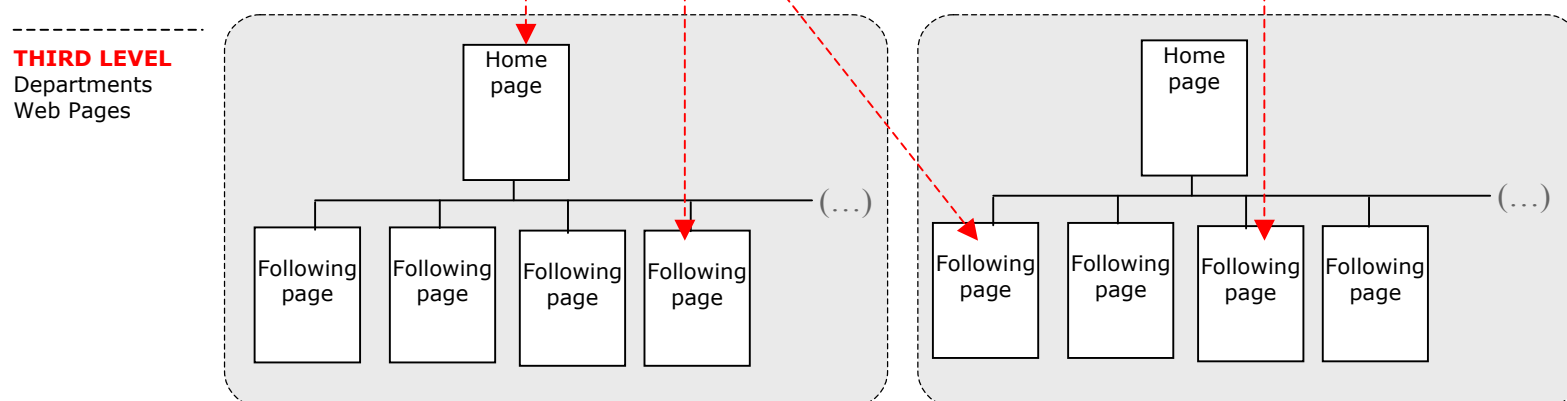
The Intranet web site today	3
Goals of the redesign project	5
The new five main areas and the content providing	6
General navigation site map	7
0. Home Page	8
1. HRD & Administration	9
Navigation map and content hierarchy	9
Section page, case A (many news)	10
Section page, case B (no news).....	11
News Archive	12
2. Services	13
Navigation map and content hierarchy	13
The main page: What's new	14
3. Information Resources	15
Navigation map and content hierarchy	15
The main page: without News	16
4. Lifestyle in HQ	17
Navigation map and content hierarchy, part A	17
Navigation map and content hierarchy, part B	18
The main page: what's new.....	19
5. HQ and Field Offices	20
Navigation map and content hierarchy, part A	20
Navigation map and content hierarchy, part B	21
The main page: without News	22
Complementary navigation menu	23
0.2 Staff list	23
0.3 Site map	24

- The ILO Intranet web site works like a “hat” over existing Departmental web pages
- Its main role is to index Departmental web pages
- The Departmental web sites indexed belong to the Intranet and the Public area
- The Departmental web site pages are manually produced and maintained by web editors inside each Department

Intranet Layer



Departmental layer



Intranet layer: the Home page

The ILO Intranet layer gives access to the Departmental web pages by means of:

Browsing methods

- A hierarchical classification system by topic and sub-topics
- An alphabetical index
- The list of all ILO working units

Search method

- Search engine

Intranet layer: Second level page, the hierarchical navigation

The screenshot shows the 'ILO INTRANET' header with a 'Home' link and navigation links for 'Search', 'Staff list', 'Site map', 'Site index', and 'HQ and Field Offices'. Below the header is a 'RESOURCES' section with three main categories: 'Technical Programmes >>', 'Resources >>', and 'Services >>'. Under 'Resources >>', there are sub-categories: 'Staff corner >>' and 'Knowledge sharing >>'. The main content area is titled 'Resources' and is divided into two columns: 'Knowledge' and 'Administrative'. The 'Knowledge' column lists various links such as 'About the ILO', 'Brio Information Access Portal', 'Country information', 'Databases', 'External links', 'External Relations and Partnerships', 'External websites', 'Non-Governmental Organizations', 'Search Institutions', 'UN Extranet', 'United Nations Organizations', 'WorkGate', 'ILO Terminology', 'ILO Thesaurus', 'Internet resources', 'Latest Ratifications', 'Legal information', 'Library', 'Press releases', 'Publication resources', and 'Statistical resources'. The 'Administrative' column lists links like 'Circulars', 'Daily Subsistence Allowance Rates (DSA)', 'Exchange rates: UN', 'Governing Body documents', 'International Labour Conference documents', 'Meetings', 'Official correspondence', 'Organization Chart', 'Registry (French only)', and 'Unit Objectives'. A 'WHAT'S NEW >>' link is also present. At the bottom, it says 'Last update: 7 May 2004' and 'Copyright © - Disclaimer - TOP'.

Departmental Layer: the common header

The screenshot shows the 'ILO INTRANET' header with a 'Home' link and navigation links for 'Search', 'Staff list', 'Site map', 'Site index', and 'HQ and Field Offices'. Below the header is a breadcrumb trail: 'Resources : Circulars'. The main content area is titled 'ILO Circulars'. Under the title, there are two sections: 'About ILO Circulars:' and 'ILO Circulars Search:'. The 'About ILO Circulars:' section contains a list of links: 'Nota Bene', 'Inventory of ILO Circulars', 'Responsible Department', 'System of ILO Circulars', 'Distribution Pattern', 'Circular model in word format (English)', 'Word templates for circulars (English, Français, Español)', and 'Instructions for using the ILO Circular template'. The 'ILO Circulars Search:' section has two sub-sections: 'Search by text' and 'Search by criteria'. The 'Search by text' section has a 'Select the type of search:' label with radio buttons for 'Simple' (selected) and 'Exact'. The 'Search by criteria' section has a 'Document Title' input field and a 'Series' dropdown menu with 'All series' selected.

A common header is placed in all the pages of any Intranet Departmental web site so that to connect the Departmental level with the Intranet level

Constraints

- It is planned, in the future, to use the WCMS technology also for the Intranet, so as consequence:
 - The ILO Intranet continue to work like a “hat” over existing Departmental web pages
 - The Departments continue to produce and maintain their own Web site using the current technology (static pages stored in file system)
 - For the Intranet layer, the attempt is to reuse the current implementation technology as much as possible

New needs

- Enhance Intranet’s functions and provide more content in order to make it work as a knowledge and operating tool for the ILO staff, by:
 - Providing more information to ILO staff, for their daily work as well as for their leisure time
 - Giving more space to those Departments providing Services and Support to ILO Staff
 - Improving the mechanism of providing more News to ILO staff
 - Pushing or highlighting specific content
- “Elect” the Intranet as the preferred media for the dissemination of internal information coming from Management
- Revise the graphic aspect of the user interface

What it was decided?

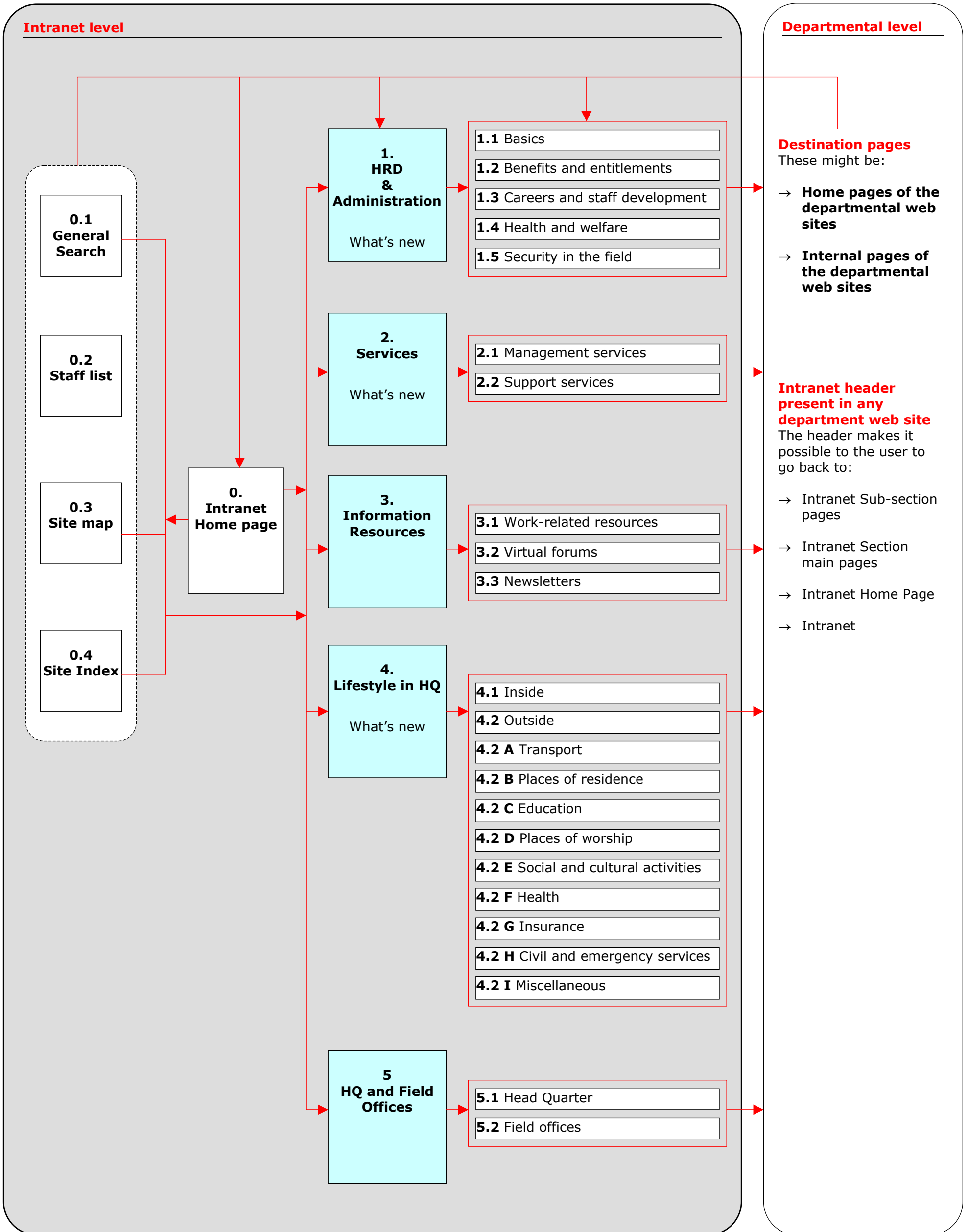
- Redefine the five main areas indexing the Departmental web sites
- Reorganize the hierarchical classification system
- Redesign the Home page
- Create a new second level page used by the Departments to provide News or highlight information

The new five main areas and the content providing

Area name	Content
1. HRD & Administration	Practical information from the HRD department
2. Services	Information from various management and support services of the ILO
3. Information Resources	A compilation of various sources of information, databases, and other work-related resources
4. Lifestyle in HQ	A compilation of practical information sources that might make life in HQ and Geneva a little bit easier and a little more fun
5. HQ and field offices	Direct links to the various ILO Offices, Departments, and Programmes

Area name	Departments providing content for:	
	What's new	Highlights and Advertising boxes
0. Home page	→ Public Information (DCOMM) → Director-General's Office (CABINET) →	DCOMM
1. HRD & Administration	→ Human Resources Development (HRD)	HRD
2. Services	→ Publications (PUBL) → Information Technology and Communications (ITCOM) → Relations, Meetings and Document Services (RELCONF) → Internal Administration (INTER) → Human Resources Development (HRD) → Financial Services (FINANCE) → Legal Services (JUR) → Programming and Management (PROGRAM) → International Training Centre (TURIN) → Ombudspersons office → Director-General's Office (CABINET)	DCOMM
3. Information Resources	None	DCOMM
4. Lifestyle in HQ	?????	DCOMM
5. HQ and field offices	None	None

General navigation site map



ILO INTRANET General Search | Staff list | Site map | Site index
French | Spanish

HRD & Administration
Services
Information Resources
Lifestyle in HQ
HQ and Field Offices

From the Office of the Director General
 289th Session of the Governing Body of the ILO, Introduction to President Mkapa
 President of the United Republic of Tanzania to the Working Party on the Social Dimension of Globalization (PDF 20. KB) Geneva, 24 March 2004
 More >>

Friday 1 October 2004
What's new Archive >>

Announcements More >>
New Guidelines for Ship breaking Adopted
 ILO charts new course for workers recycling a growing fleet of aging ships. 10/12/2004
New Guidelines for Ship breaking Adopted
 ILO charts new course for workers recycling a growing fleet of aging ships. 10/12/2004
Events at ILO More >>
New Guidelines for Ship breaking Adopted
 ILO charts new course for workers recycling a growing fleet of aging ships. 10/12/2004
New Guidelines for Ship breaking Adopted
 ILO charts new course for workers recycling a growing fleet of aging ships. 10/12/2004
Press released, Press briefings and latest Publications More >>
New Guidelines for Ship breaking Adopted
 ILO charts new course for workers recycling a growing fleet of aging ships. 10/12/2004
New Guidelines for Ship breaking Adopted
 ILO charts new course for workers recycling a growing fleet of aging ships. 10/12/2004

Highlights
 >> HRD Voice
 >> Field Security measures
 >> How do I
 >> HQ Bank and PTT opening hours
 >> HQ Cafeteria weekly menu
 >> HQ Emergency phone numbers
 >> Regions time zone
 >> Staff directory
 >> International Labour Conference
 >> Governing Body
 >> Technical Programmes
 >> Regions related
 >> World Commission
 >> ILO on TV
 >> Photo-library

Logo

5-days Meteo forecasting
 News from the word

Last update: 1 October 2004 - [Copyright](#) © 1996-2002 International Labour Organization (ILO) - [Disclaimer](#)

Horizontal scrolling Ticker for the News
 In collaboration with a News provider

Meteo forecasting
 In collaboration with <http://www.meteonews.ch>

What's new
High frequency of updating
12 News maximum can be published: **4 for each category**
Note that:

- Not always there is a link
- In case of links there are 2 possibilities: link to a destination page at the Department Level or link to page a where the compiler can add more content.
- It is possible to add an image

For what concern the mechanism for deciding the permanence time, please refer to the actual policy: <http://mirror/intranet/english/www/download/newspol.pdf>

Special Advertise
 Here it is foreseen to place more than a text, an image or a logo

Link
 It leads to the "More" page where are listed in chronological order more news of the same category.

Link
 It leads to the "Archive" page where it is possible to search for old news.

Highlight box
 It contains links to relevant information. Items are grouped according with the 5 main areas in the navigation menu. Each sub-list is in alphabetical order.

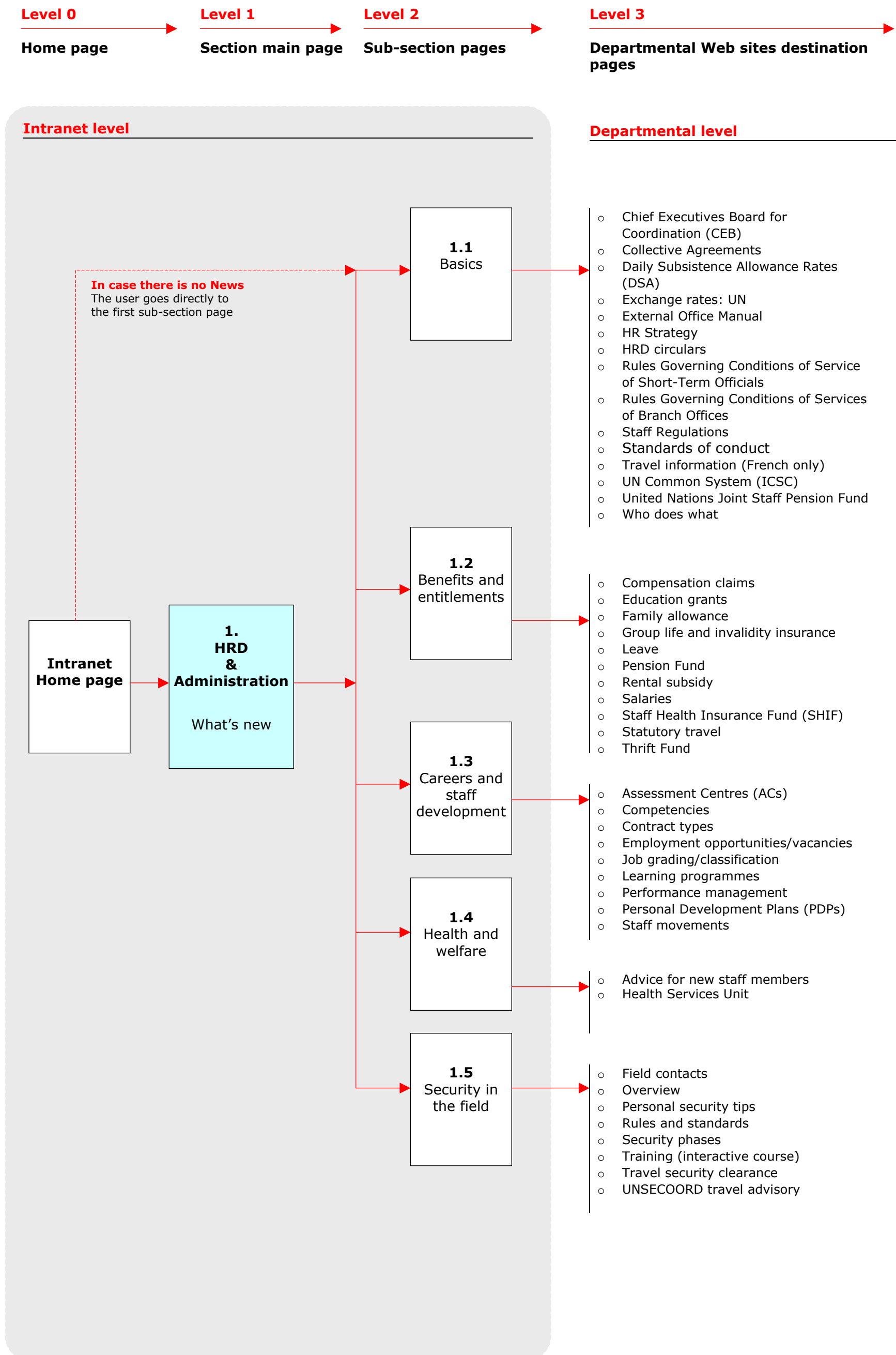
Link
 It leads to the "More" page where are listed in chronological order more news of the same category.

New highlights.
 They should be classified and grouped according with the 5 main areas in the navigation menu

What's for Lunch?
 ILO Classifieds
 Bank
 Post Office
 Health Club
 Staff Regulations
 Travel Information
 Exchange Rates
 Employment Opportunities
 UNSECOORD Travel Advisory
 Project IRIS
 DCOMM
 ITCOM
 Publications
 INFORM
 Social Services
 Staff Union
 Statistical Resources
 GB Documents
 ILC Documents
 ILO on TV
 Photo Library

1. HRD & Administration

Navigation map and content hierarchy



General notes

The main page of the HRD & Administration section presents the latest News.

View all The selection of this link loads a page with the complete list of links at the third level grouped by the second level Items (Basic, Benefits and entitlements etc.)

Second level navigation Each sub-topic is a link leading to a page with the list of links (the third level)

Main navigation menu

Search feature for searching by word in this section.

Highlight box It contains links to relevant information. The list is in alphabetical order

Link It leads to the "Archive" page where it is possible to search for old news.

Link It leads to the "More" page where are listed in chronological order more news.

What's new
High frequency of updating
Each New has a blurb. 8 news maximum can be published.

For what concern the mechanism for deciding the permanence time, please refer to the actual policy:
<http://mirror/intranet/english/www/download/newspol.pdf>

Things still to be decided

Feasibility of the Search by word feature.

The idea is to configure the search facility, at the moment working on the Intranet in general (HTIDG - see <http://www.htdig.org/>), in order to address it to search only inside some web sites (web directories). I mean those web sites (web directories) that are classified under each main topic. By doing this we narrow the research to the related context: HRD & Administration, Services etc. So the resulting list of items should be more accurate.

The real problem is represented by Dynamic web site pages: it seems that the HTIDG search is not able to search inside Database tables, it is only able to search for words in files and therefore in static web site pages (files in file system).

In any case i'm not sure the last statement is true, maybe we will discover that the HTIDG search facility is able also to look into database.

Another issue, not technical, for the feasibility of using the search facility is to list how many pages/information are Dynamically generated in each main topics. So in case a main topic is mainly made up by pages/information dynamically generated, then the search engine becomes not applicable.

ILO INTRANET Home | General Search | Staff list | Site map | Site index
French | Spanish

HRD & Administration
(View all »)

- Basics
- Benefits and entitlements
- Careers and staff development
- Health and Welfare
- Security in the Field

Services

Information Resources

Lifestyle in HQ

HQ and Field Offices

HRD & Administration [What's new >](#)

Basics
In alphabetical order

- Chief Executives Board for Coordination (CEB)
- Collective Agreements
- Daily Subsistence Allowance Rates (DSA)
- Exchange rates: UN
- External Office Manual
- HR Strategy
- HRD circulars
- Rules Governing Conditions of Service of Short-Term Officials
- Rules Governing Conditions of Services of Branch Offices
- Staff Regulations
- Standards of conduct
- Travel information (French only)
- UN Common System (ICSC)
- United Nations Joint Staff Pension Fund
- Who does what

Search in HRD & Administration for:

GO >

Highlights

- » [Staff regulations](#)
- » [HRD Circulars \(Series 6\)](#)
- » [Daily Subsistence Allowance \(DSA\)](#)
- » [UN Exchange Rate](#)
- » [Leave](#)
- » [Education Grants](#)
- » [Compensation](#)
- » [Claims](#)
- » [Pension Fund](#)
- » [Trift Fund](#)
- » [Employment](#)
- » [Opportunities](#)
- » [Contract types](#)
- » [UNSECOORD Travel Advisory](#)

Staff Health Insurance Fund
Include a short description explaining what it is. [Link to destination page](#)

UN Staff Pension Fund
Include a short description explaining what it is. [Link to destination page](#)

Last update: 1 October 2004 - [Copyright](#) © 1996-2002 International Labour Organization (ILO) - [Disclaimer](#)

View all The selection of this link loads a page with the complete list of links at the third level grouped by the second level Items (Basic, Benefits and entitlements etc.)

What's new
Link to get back to the what's new page.

Second level navigation
Each sub-topic is a link leading to a page with the list of links (the third level)

Main navigation menu

Search feature
for searching by word in this section.

Highlight box
It contains links to relevant information. The list is in alphabetical order

Advertisement boxes

General notes

The News Archive functioning is the same for all the section of the wee site. The following wireframe illustrates in detail how this section works. Note also that this the default, presenting the complete list of the archived news split in mere pages

The wireframe shows the layout of the 'HRD & Administration' News Archive page. It includes a top navigation bar with 'ILO INTRANET' and links to 'Home', 'General Search', 'Staff list', 'Site map', and 'Site index'. A language selector for 'French' and 'Spanish' is also present. The main content area is divided into three columns. The left column contains a 'Main navigation menu' with sections for 'HRD & Administration', 'Services', 'Information Resources', 'Lifestyle in HQ', and 'HQ and Field Offices'. The middle column features a 'Search for word in title and blurb' box, a 'Restrict search (or search by) date' section with dropdowns for 'All day', 'All Months', and 'All Years', and a 'List All' section displaying several news items with titles and dates. The right column includes a 'Search in HRD & Administration for:' box, a 'Highlights' list of various topics, and two 'Advertisement boxes' for 'Staff Health Insurance Fund' and 'UN Staff Pension Fund'. Annotations with red lines and dots point to these specific elements, explaining their function.

Second level navigation
Each sub-topic is a link leading to a page with the list of links (the third level)

Main navigation menu

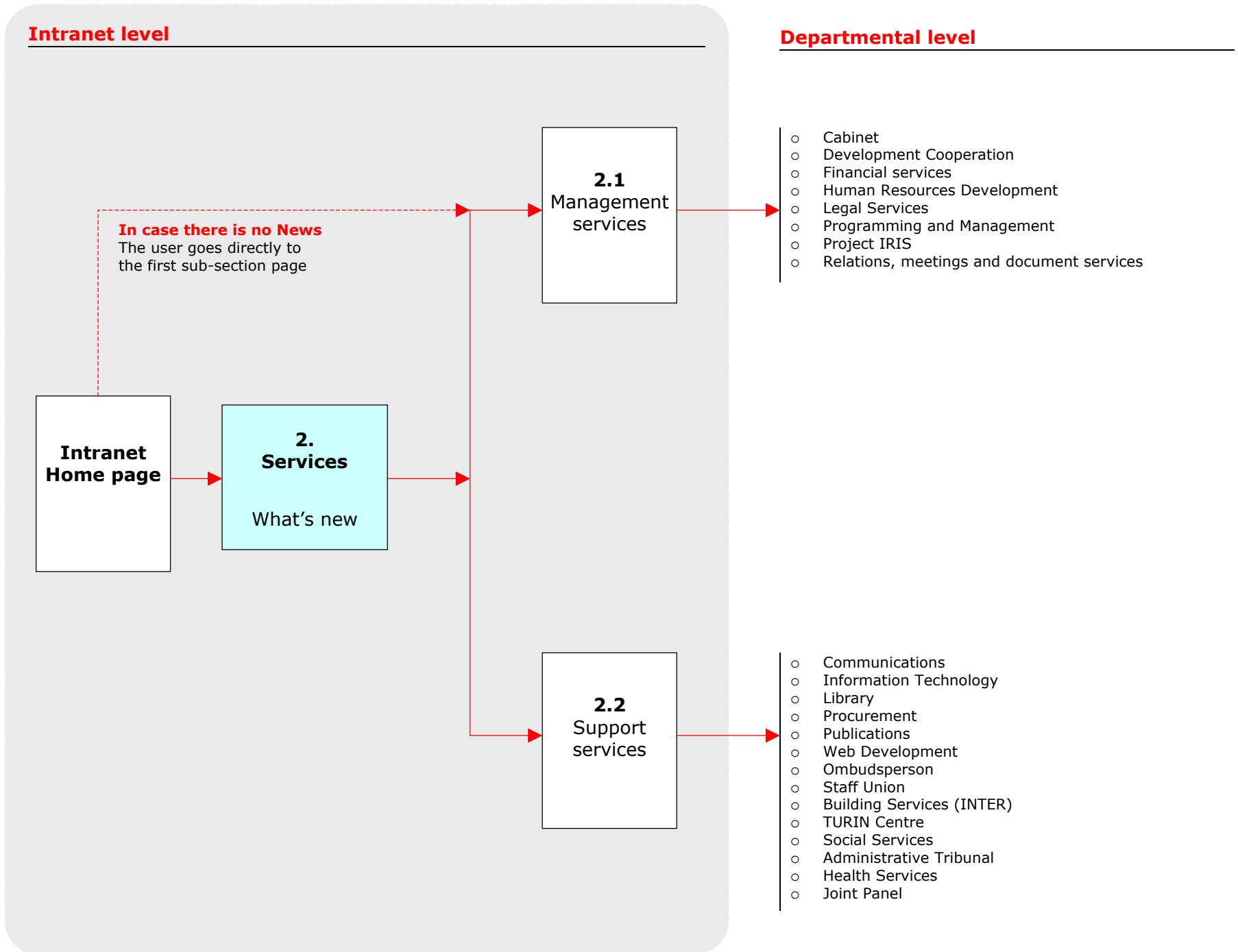
Search feature
for searching by word in this section.

Highlight box
It contains links to relevant information. The list is in alphabetical order

Browsing tool

Advertisement boxes

List of all archived news
Maximum 20 news per page, the latest on top.
The list can be browsed by means of the "browsing tool"



General notes

The main page of the Services section presents the latest News.

ILO INTRANET Home | General Search | Staff list | Site map | Site index
French | Spanish

HRD & Administration

Services (view all »)

- Management
- Support

Information Resources

Lifestyle in HQ

HQ and Field Offices

Services Friday 3d April 2004

What's new Archive »

New Guidelines for Ship breaking Adopted
ILO charts new course for workers recycling a growing fleet of aging ships. 12/03/2004

In Nepal, micro-insurance helps the poor cope with health needs
The ILO's "STEP" programme (Strategies and Tools against Social Exclusion and Poverty) promotes innovative 12/02/2004

New Guidelines for Ship breaking Adopted
ILO charts new course for workers recycling a growing fleet of aging ships. 08/03/2004

In Nepal, micro-insurance helps the poor cope with health needs
The ILO's "STEP" programme (Strategies and Tools against Social Exclusion and Poverty) promotes innovative 08/02/2004

In Nepal, micro-insurance helps the poor cope with health needs
The ILO's "STEP" programme (Strategies and Tools against Social Exclusion and Poverty) promotes innovative 05/03/2004

In Nepal, micro-insurance helps the poor cope with health needs
The ILO's "STEP" programme (Strategies and Tools against Social Exclusion and Poverty) promotes innovative 20/02/2004

More »

Search in Services for:
GO >

Highlights

- » Building Services
- » Cabinet
- » Financial Services
- » Legal Services
- » Library
- » Programme & Budget
- » Publications
- » Turin Centre
- » Web Development Unit

Image
New Publication from PUBL

Image
Project IRIS
Include a short description explaining what it is
[Link to destination page](#)

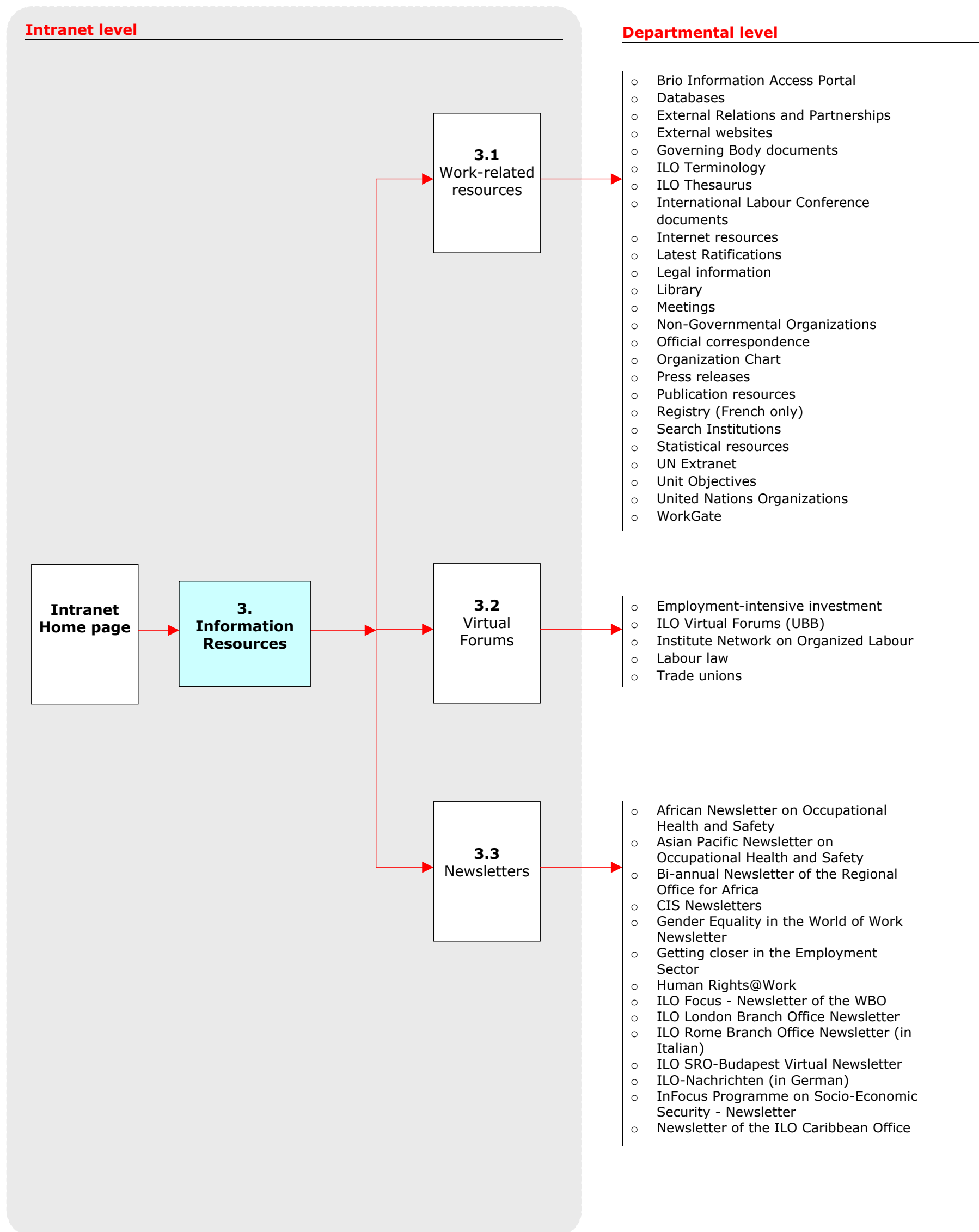
Last update: 03 April 2004 - [Copyright](#) © 1996-2002 International Labour Organization (ILO) - [Disclaimer](#)

What's new
High frequency of updating

Each New has a blurb. 8 news maximum can be published.

3. Information Resources

Navigation map and content hierarchy



2. Information Resources

The main page: without News

General notes

For this section of the site News are not foreseen, so the main page of the Services section presents the third level links

Main navigation menu

Second level navigation
Each sub-topic is a link leading to a page with the list of links

Advertisement boxes
Advertisement boxes may be placed also on the left part of the page, under the main navigation menu.
In this case, it is up to the person dealing with the data entry tool to decide where to position the advertisement boxes (on the left/right part of the page).

Highlight box
It contains links to relevant information
The list is in alphabetical order

Advertisement boxes

Image
Not always it is presents

Information Resources

Home | General Search | Staff list | Site map | Site index
French | Spanish

HRD & Administration

Services

Information Resources
(view all »)

- Work-related resources
- Newsletters
- Virtual Forums

Lifestyle in HQ

HQ and Field Offices

Information Resources

Search in Information Resources for:

GO >

Highlights

- » Cabinet
- » GB Documents
- » ILC Documents
- » ILO Thesaurus
- » Latest Ratifications
- » Library Resources
- » NGOs
- » Publication
- » Resources
- » UN Organizations
- » Virtual Forums
- » WorkGate

ILO Newsletters
Include a short description explaining what it is. [Link to a destination page](#)

Statistical Databases
Include a short description explaining what it is. [Link to a 3th level page](#)

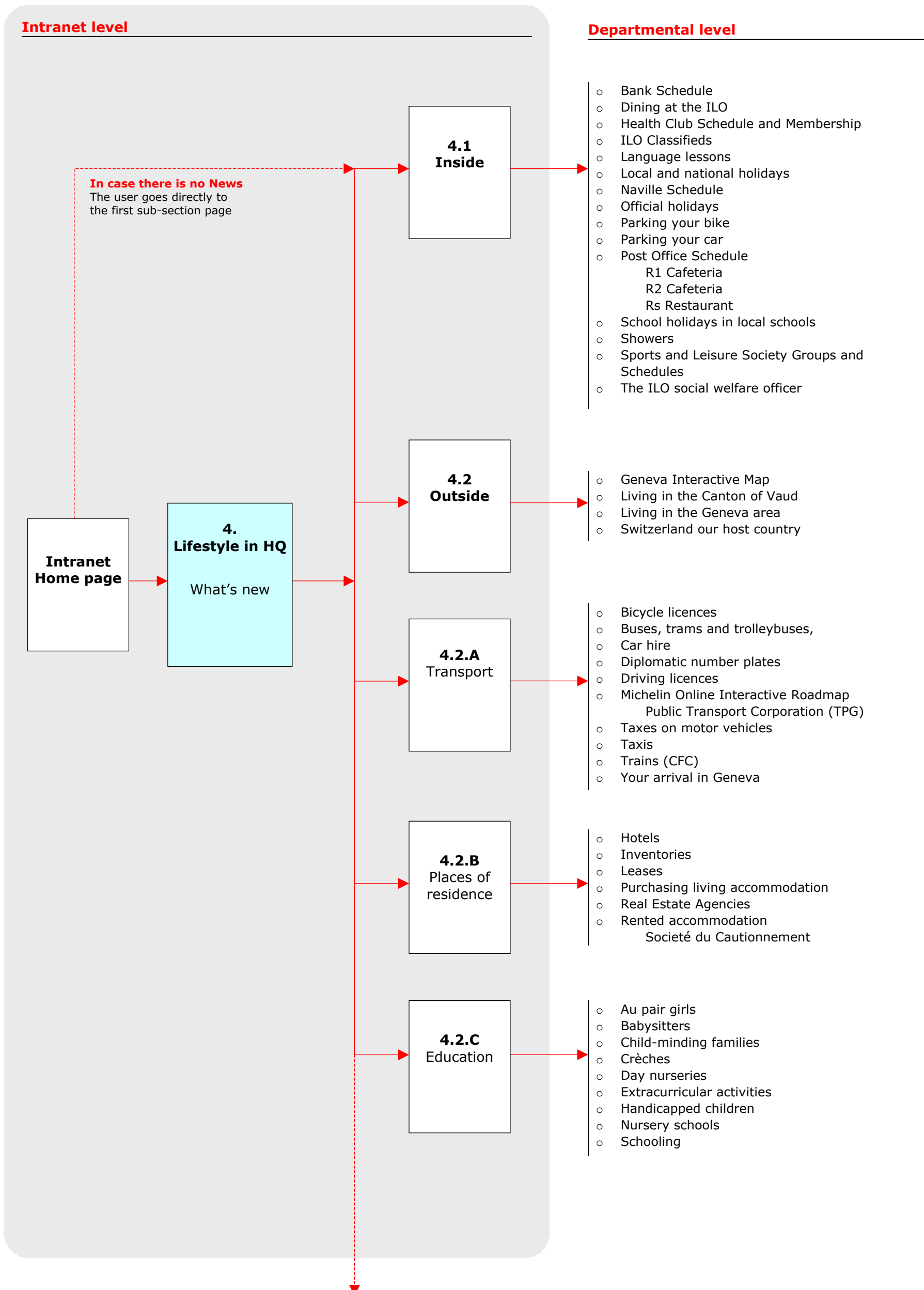
Work-related Resources
In alphabetical order

- Brio Information Access Portal
- Country information
- Databases
- External Relations and Partnerships
- External websites
- Governing Body documents
- ILO Terminology
- ILO Thesaurus
- International Labour Conference documents
- Internet resources
- Latest Ratifications
- Legal information
- Library
- Meetings
- Non-Governmental Organizations
- Official correspondence
- Organization Chart
- Press releases
- Publication resources
- Registry (French only)
- Search Institutions
- Statistical resources
- UN Extranet
- Unit Objectives
- United Nations Organizations
- WorkGate

Last update: 03 April 2004 - [Copyright](#) © 1996-2002 International Labour Organization (ILO) - [Disclaimer](#)

4. Lifestyle in HQ

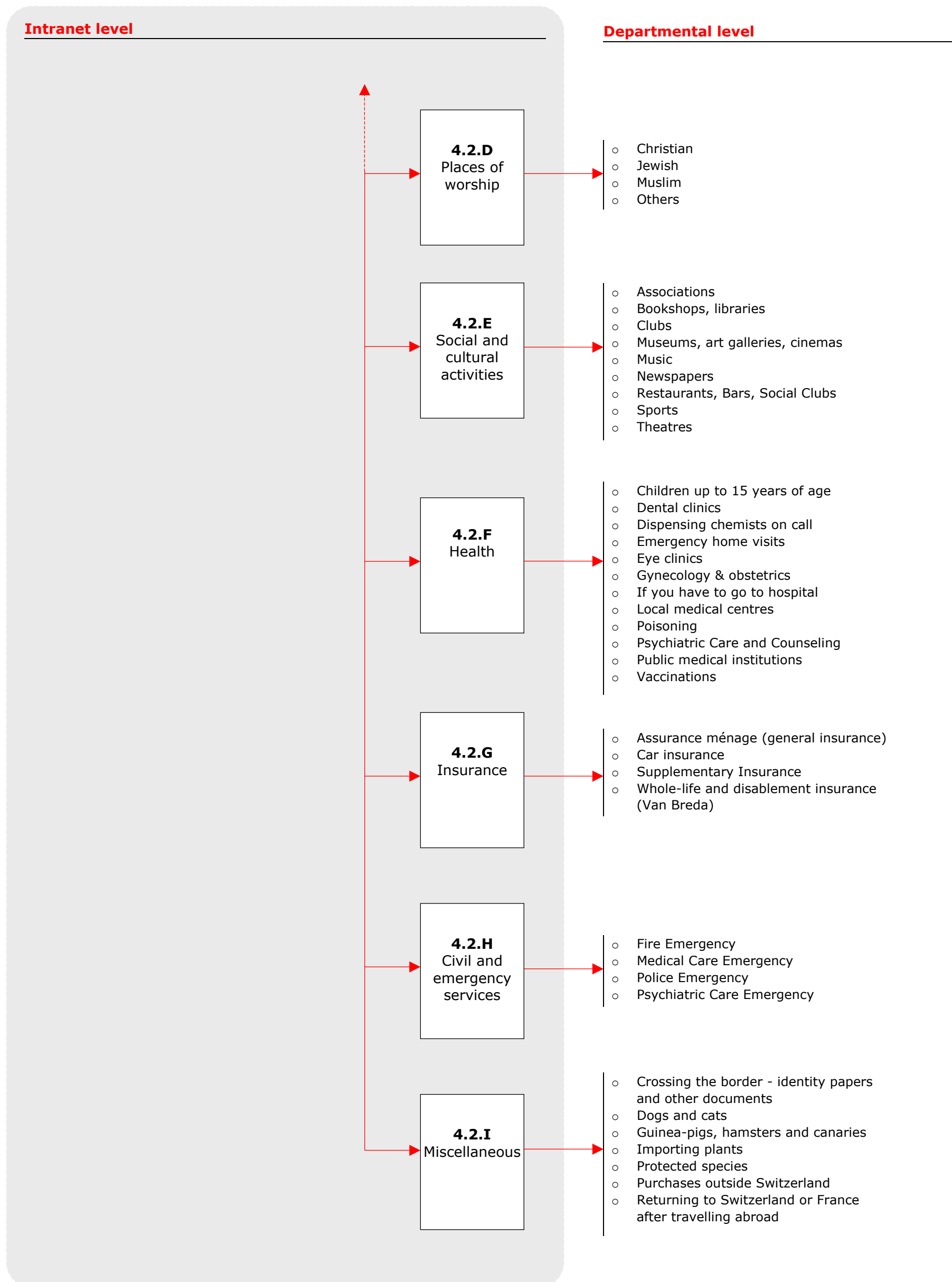
Navigation map and content hierarchy, part A





Intranet level

Departmental level



ILO INTRANET
Home | General Search | Staff list | Site map | Site index
French | Spanish

HRD & Administration

Services

Information Resources

Lifestyle in HQ

- **Inside the ILO HQ**
- **Outside the ILO HQ**
- Civil and Emergency services
- Education
- Health
- Insurance
- Miscellaneous
- Place of residence
- Places of worship
- Social and cultural activities
- Transport

HQ and Field Offices

Lifestyle in HQ

Friday 3d April 2004

What's new
Archive >>

New Guidelines for Ship breaking Adopted

ILO charts new course for workers recycling a growing fleet of aging ships.
12/03/2004

In Nepal, micro-insurance helps the poor cope with health needs

The ILO's "STEP" programme (Strategies and Tools against Social Exclusion and Poverty) promotes innovative
12/02/2004

New Guidelines for Ship breaking Adopted

ILO charts new course for workers recycling a growing fleet of aging ships.
08/03/2004

In Nepal, micro-insurance helps the poor cope with health needs

The ILO's "STEP" programme (Strategies and Tools against Social Exclusion and Poverty) promotes innovative
08/02/2004

More >>

Search in Lifestyle in HQ for:

GO >

Highlights

- >> Airport Cointrin
- >> Bank
- >> Crèches
- >> Day Nurseries
- >> Dental Clinics
- >> Dining at the ILO
- >> Fire Emergency
- >> Health Club
- >> Interactive
- Streetmap of Geneva
- >> Language Lessons
- >> Local Medical Centres
- >> Medical Emergency
- >> Pet Kennels
- >> Police Emergency
- >> Post Office
- >> Psychiatric Care and Counseling
- >> Public Transport (TPG)
- >> Real Estate Agents
- >> Trains

New to the Geneva social scene? Try SINDY.

Include a short description explaining what it is
[Link to destination page](#)

Image

Having lunch at the ILO?

Include a short description explaining what it is
[Link to destination page](#)

Image

ILO Classifieds

Include a short description explaining what it is
[Link to destination page](#)

Last update: 03 April 2004 - [Copyright](#) © 1996-2002 International Labour Organization (ILO) - [Disclaimer](#)

Main navigaon menu

Second level navigation
Each sub-topic is a link leading to a page with the list of links

Advertisement boxes
Advertisement boxes may be placed also on the left part of the page, under the main navigation menu.

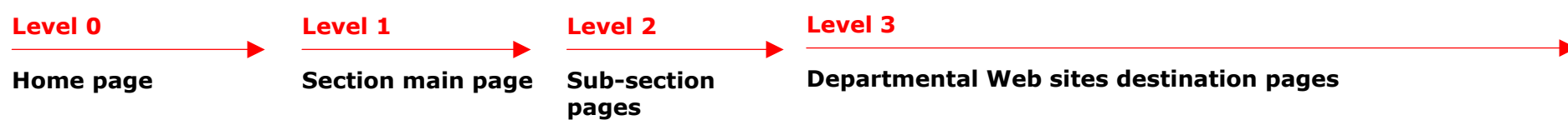
In this case, it is up to the person dealing with the data entry tool to decide where to position the advertisement boxes (on the left/right part of the page).

Highlight box
It contains links to relevant information
The list is in alphabetical order

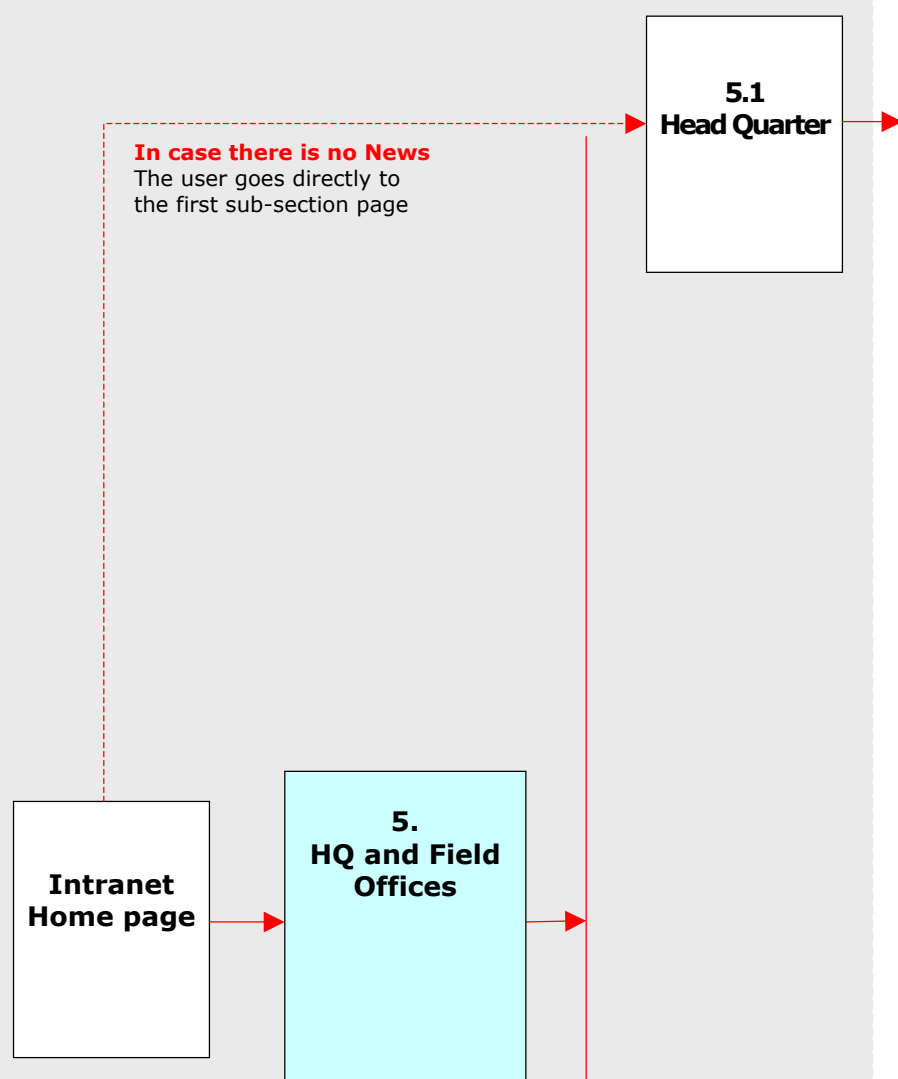
What's new
High frequency of updating
Each New has a blurb. 8 news maximum can be published.

5. HQ and Field Offices

Navigation map and content hierarchy, part A



Intranet level



Departmental level

Sectors

Standards and Fundamental Principles and Rights at Work (STANDARDS)

- o InFocus Programme on Promoting the Declaration (DECLARATION)
- o International Labour Standards (NORMES)
 - o Indigenous and Tribal Peoples
 - o Project to Promote ILO Convention No. 169
- o International Programme on the Elimination of Child Labour: IPEC (IPEC)
- o Relations, Meetings and Document Services (RELCONF)

Employment (EMPLOYMENT)

- o Cooperatives (COOP)
- o Employment Intensive Investment (EMP/INVEST)
- o Employment Strategy (EMP/STRAT)
- o Gender Promotion (GENPROM)
- o InFocus Programme on Boosting Employment through Small Enterprise Development (IFP/SEED)
- o InFocus Programme on Crisis Response and Reconstruction (IFP/CRISIS)
- o Job Creation and Enterprise Development (EMP/ENT)
- o Local Economic Development (LED)
- o Management & Corporate Citizenship Programme (MCC)
- o Multinational Enterprises (MULTI)
- o Recovery and Reconstruction (EMP/RECON)
- o Skills Development: InFocus Programme on Skills, Knowledge and Employability (IFP/SKILLS)
- o Social Finance

Social Protection (PROTECTION)

- o Conditions of Work (CONDIT)
- o Financial, Actuarial and Statistical Services (SOC/FAS)
- o HIV/AIDS (ILO/AIDS) - Public
- o InFocus Programme on Safety and Health at Work and the Environment (SAFEWORK)
- o InFocus Programme on Socio-Economic Security (IFP/SES)
- o International Migration (MIGRANT)
- o Social Security Policy and Development (SOC/POL)
- o Strategies and Tools Against Social Exclusion and Poverty

Social Dialogue (DIALOGUE)

- o Employers' Activities (ACT/EMP)
- o InFocus Programme on Social Dialogue, Labour Law and Labour Administration (IFP/DIALOGUE)
- o Sectoral Activities (SECTOR)
- o Workers' Activities (ACTRAV)

Support services

- o Financial Services (FINANCE)
- o Information Technology and Communications (ITCOM)
- o Internal Administration (INTER)
- o Library and Information Services (INFORM)

Reporting to the DG

- o Branch Office: Tokyo (TOKYO/BO)
- o Director-General's Office (CABINET)
- o External Relations and Partnerships (EXREL)
- o Gender Equality (GENDER)
- o Human Resources Development (HRD)
- o International Institute for Labour Studies (INST)
- o International Training Centre (TURIN)
- o Legal Services (JUR)
- o New York Liaison Office (NYLO) - Intranet
- o Office of Internal Audit and Oversight (IAO)
- o Policy Integration (INTEGRATION)
- o Programming and Management (PROGRAM)
- o Public Information (DCOMM)
- o Statistics (STAT)

Association

- o International Social Security Association (ISSA)
- o Sports & Leisure Association of the ILO
- o Staff Union

Administrative Tribunal

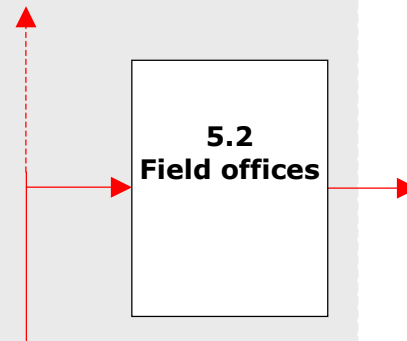
WARNING! Exception to the rule
This is not a second level item. The link leads directly to the web site

5. HQ and Field Offices

Navigation map and content hierarchy, part B



Intranet level



Departmental level

- **Regions and Technical Cooperation (REGIONS)**
- **Development Cooperation (CODEV)**
- **Field Programmes in Africa (AFRICA)**
 - Regional Office for Africa: Abidjan
 - Subregional Office for Central Africa: SRO-Yaoundé
 - Subregional Office for East Africa: SRO-Addis Ababa
 - Subregional Office for North Africa: SRO-Cairo
 - Subregional Office for Southern Africa: SRO-Harare
 - Subregional Office for West Africa: SRO-Abidjan
 - Regional Office for Africa: RO-Abidjan
 - Subregional Office for the Sahel Region: SRO-Dakar
- **Field Programmes in Latin America and the Caribbean (AMERICAS)**
 - Regional Office for Latin America and the Caribbean: RO-Lima
 - Subregional Office for the Andean Countries: SRO-Lima
 - Subregional Office for the Caribbean: SRO-Port of Spain
 - Mercosur Laboral (Mercolab)
 - ILO Office in Brazil: ILO-Brasilia
 - ILO Office in Argentina: ILO-Buenos Aires
 - ILO Office for Mexico and Cuba: ILO-Mexico
 - Subregional Office for Central America: ILO-San José
 - Inter-American Research and Documentation Centre on Vocational Training (CINTERFOR)
 - Subregional Office for the South Cone of Latin America: SRO-Santiago
- **Field Programmes in Arab States (ARABSTATES)**
 - Regional Office for the Arab States: RO-Beirut
 - Field Programmes in Asia and the Pacific (ASIA)
- **Regional Office for Asia and the Pacific: RO-Bangkok**
 - Subregional Office for East Asia: SRO-Bangkok
 - Subregional Office for South Asia: SRO-New Delhi
 - Subregional Office for South-East Asia and the Pacific: SRO-Manila
 - ILO Office for China and Mongolia: ILO-Beijing
 - ILO Office in Sri Lanka: ILO-Colombo
 - ILO Office in Indonesia: ILO-Jakarta
 - Subregional Office for South Asia: SRO-New Delhi
 - ILO Office for Fiji, Papua New Guinea, Solomon Islands, Kiribati and other South Pacific islands: ILO-Suva
 - ILO Office in Japan: ILO-Tokyo
 - ILO Office in Nepal: ILO-Kathmandu
- **Field Programmes in Europe and Central Asia (EUROPE)**
 - Regional Office for Europe and Central Asia: Geneva
 - Subregional Office for Central and Eastern Europe: SRO-Budapest
 - Subregional Office for Eastern Europe and Central Asia: SRO-Moscow
 - ILO Office in Turkey: ILO-Ankara
 - ILO Office in Germany: ILO-Bonn
 - ILO Office for the United Kingdom and Ireland: ILO-London
 - ILO Office in Spain: ILO-Madrid
 - ILO Office in France: ILO-Paris
 - ILO Office for Italy and San Marino: ILO-Rome
 - ILO Office for the European Union and the Benelux countries: ILO-Brussels
- **Policy Integration (INTEGRATION)**

General notes

For this section of the site News are not foreseen, so the main page of the Services section presents the third level links

The page contains the complete list of the working units at ILO both in HQ and in the fields, also those have not a Public or an Intranet web site.

Note that
The list is further grouped by:
→ Head Quarter
→ Field offices

Main navigation menu
Note it is close because we are out of the hierachical navigation

See also box
Contains link related to the page content

NOTE THAT
This link was in the "Staff list" page.

ILO INTRANET Home | General Search | Staff list | Site map | Site index
French | Spanish

HRD & Administration

Services

Information Resources

Lifestyle in HQ

HQ and Field Offices
(view all)

- HQ
- Field offices

See also

- » [ILO Official Programme Directory](#)
Phone/fax number and email addresses for each ILO office

Head Quarter and Field offices

Head Quarter

Find inside the page
 GO >

Sectors

Standards and Fundamental Principles and Rights at Work (STANDARDS) - Public

- International Labour Standards (NORMES) - Public
- Indigenous and Tribal Peoples - Public
- Project to Promote ILO Convention No. 169 - Public
- InFocus Programme on Promoting the Declaration (DECLARATION) - Public
- International Programme on the Elimination of Child Labour: IPEC (IPEC) - Public - Intranet
- Relations, Meetings and Document Services (RELCONF) - Public

Employment (EMPLOYMENT) - Public - Intranet

- Employment Strategy (EMP/STRAT) - Public
- Recovery and Reconstruction (EMP/RECON) - Public - Intranet
- InFocus Programme on Crisis Response and Reconstruction (IFP/CRISIS) - Public
- Employment Intensive Investment (EMP/INVEST) - Public - Intranet

Support services

- Financial Services (FINANCE) - Intranet
- Information Technology and Communications (ITCOM) - Public - Intranet
- Internal Administration (INTER) - Intranet
- Library and Information Services (INFORM) - Public - Intranet
- Publications (PUBL) - Public - Intranet

Reporting to the DG

- Branch Office: Tokyo (TOKYO/BO) - Public
- Director-General's Office (CABINET) - Public - Intranet
- External Relations and Partnerships (EXREL) - Public
- Gender Equality (GENDER) - Public - Intranet
- Human Resources Development (HRD) - Public - Intranet
- International Institute for Labour Studies (INST) - Public - Intranet

Last update: 03 April 2004 - [Copyright](#) © 1996-2002 International Labour Organization (ILO) - [Disclaimer](#)

Note that
We can see 2 different colors in order to distinguish the Intranet web site from the Public one

Future plans

For the future, once the Intranet would adopt the WCMS as publishing technology, it is foreseen to improve this section adding, for each Sector, Department, Bureau and Programme giving contact information: Unit address, contact person name and surname, email, phone numbers etc.

This kind of information is managed by DOSCOM, but it is still on static web site pages (see: <http://mirror/public/english/depts/dir.htm>).

We can foresee, once adopted the WCMS, to manage them electronically, creating a Database interfaced with the web.

General notes

- Note that all the pages belonging to the “Complementary navigation” don’t contain Advertising boxes and Highlights area
- By default the main page shows the list of the initial A. Note that an improvement is foreseen concerning the search features.

ILO INTRANET Home | General Search | Staff list | Site map | Site index
French | Spanish

HRD & Administration

Services

Information Resources

Lifestyle in HQ

HQ and Field Offices

Staff list

This is a monthly copy of the telephone directory maintained by DOSCOM. Please report modifications to DOSCOM. e-mail: telephone@ilo.org

Search for word in Name and Surname:

Restrict search (or search by) Unit:

Select a Unit **GO >**

See also

[» Headquarters phone list \(PDF, 190 Kb\)](#)

Search mask
The 2 fields are in AND logic. But it is possible to use both in a separated manner.

Pull-down menu
For browsing through all the alphabet

Surname, first name	Telephone	Unit	Office
Abainesh, G. Kidan (Ms.)		AFRICA	
Abdel Fattah, Mona (Ms.)	+41 22 799 6230	TRAITEXT	2-56
Abdel Halim, Gamila (Mr.)	+202-7350123	AFRICA	
Abella, Manolo (Mr.)	+41 22 799 7892	MIGRANT	7-37
Achio, Francoise			
Ackroyd, Sian Elisabeth (Ms.)	+41 22 799 6753	DTS	2-148
Adamo, Kinane (Ms.)	+41 22 799 7730	RELOFF	2-155
Addo-Yobo, Harvey (Mr.)	+41 22 799 8725	DCOMM	1-47

Last update: 03 April 2004 - [Copyright](#) © 1996-2002 International Labour Organization (ILO) - [Disclaimer](#)

General notes

By default the main page shows the first 2 levels

Third level

The third level is visible when the user selects any of the third level items. The feature to have the whole tree (the site index) expanded on the page is not suitable due to the amount of items.

Expand to view all

It is also possible to view the whole tree (for any main topic) selecting the related link to the main section name.

Main navigation menu
Note it is close because we are out of the hierarchical navigation

ILO INTRANET Home | General Search | Staff list | Site map | Site index
French | Spanish

Site map
This is a monthly copy of the telephone directory maintained by DOSCOM. Please report modifications to DOSCOM. e-mail: telephone@ilo.org

HRD & Administration (expand to view all) **1th level**

Basics **2nd level**

Chief Executives Board for Coordination (CEB) **3th level**
Collective Agreements
Daily Subsistence Allowance Rates (DSA)
Exchange rates: UN
External Office Manual
HR Strategy
HRD circulars
Rules Governing Conditions of Service of Short-Term Officials
Rules Governing Conditions of Services of Branch Offices
Staff Regulations
Standards of conduct
Travel information (French only)
UN Common System (ICSC)
United Nations Joint Staff Pension Fund
Who does what

Benefits and entitlements
Careers and staff development
Health and Welfare
Security in the Field
Unsecoord Travel Advisory

Services
Management Services
Support Services

Information Resources
Databases
Virtual Forums
Newsletters

Lifestyle in HQ
Inside the ILO HQ
Outside the ILO HQ
Transport
Place of residence
Education
Places of Worship
Social and Cultural Activities
Health
Insurance
Civil and Emergency Services
Miscellaneous

Offices, Departments, and Programmes
(...)

Last update: 03 April 2004 - [Copyright](#) © 1996-2002 International Labour Organization (ILO) - [Disclaimer](#)